

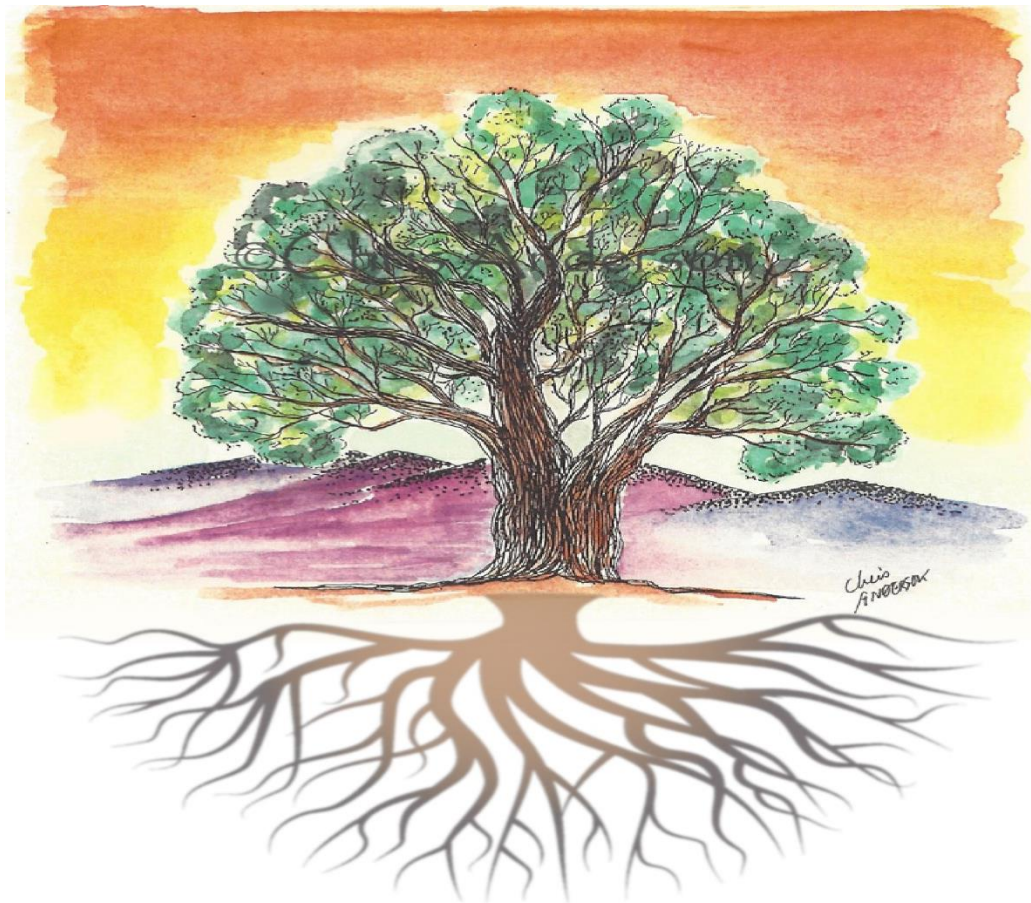
LURAY GARDEN CLUB

Formed in 1931

Federated in 1933

CELEBRATING NINETY YEARS!

Treasuring our Roots



National Garden Club Small Standard Flower Show

Saturday May 21, 2022 1-4 P.M.

@ VFW Comer Jones Post 621 218 Veterans Lane Luray, Virginia 22835

Admission Free and Open to the Public

Luray Garden Club is a member of the National Garden Clubs Inc. South Atlantic Region,
Virginia Federation of Garden Clubs, Shenandoah District.

Treasure Our Roots celebrates the 90th anniversary year of the
Luray Garden Club.

On November 16, 1931 the Luray Caverns Garden Club was formed. (Later the word “Caverns” was dropped from the name.) In 1933, representatives from the Luray Garden Club attended the organizational meeting in Norfolk for the founding of the Virginia Federation of Garden Clubs. In November 1934, the sixteen clubs in the Shenandoah District were organized. This was the first district to organize in the state!

The Luray Garden Club has worked to enhance the community for ninety years through its projects in the Town of Luray, in the County of Page, and through its contributions to organizations and efforts at the state and national level.

Luray Garden Club Officers: Rose Ann Smythe, President Susan King, Vice President
Joan Kestermann, Secretary Susan Zorn, Treasurer Roberta Arcand, Corresponding Secretary

Accredited Master Flower Show Judge: Gretchen Mulligan **Club Chaplain:** Susan Rinaca

TABLE OF CONTENTS

<i>Treasuring our Roots</i> Flower Show Committee	Page 2
General Rules	Page 3
Awards	Page 4
Horticulture Rules	Page 5
Horticulture Division I: <i>What Surrounds Us</i>	Pages 6-7
Design Rules	Page 8
Design Division II: <i>Looking Back</i>	Pages 9
Exhibit: <i>Teaching Others</i>	Page 10

TREASURING OUR ROOTS
FLOWER SHOW COMMITTEE

General Chairman	Rose Ann Smythe	smytheroseann@gmail.com	540-631-5771
Schedule Chairman	Susan Zorn	susan@susanzorn.com	410-507-3237
Staging	Susan Rinaca	susan.rinaca@gmail.com	540-742-1848
Horticulture Division			
Entries Chairman	Joan Kestermann	Aria3020@aol.com	703-675-1996
Classification Chairman	Karen Baughan,	kplbn@embarqmail.com	540-743-6496
Placement	Susan King	psking@live.com	703-772-9210
Consultant	Susan Zorn	susan@susanzorn.com	410-507-3237
Design Division			
Entries Chairman	Susan Zorn	susan@susanzorn.com	410-507-3237
Classification	Loree Fisher	lgfisherart@gmail.com	540-743-5477
Placement	Susan Rinaca	susan.rinaca@gmail.com	540-742-1848
Consultant	Gretchen Mulligan	gmulligan5@yahoo.com	703-303-8163
Exhibit Chair			
	Monica McCourt	monimn29@gmail.com	
Judges Chairman	Gretchen Mulligan	gmulligan5@yahoo.com	703-303-8163
Clerks Chairman	Monica McCourt	monimn29@gmail.com	540-860-9671
Awards Chairman	Joan Kestermann	Aria3020@aol.com	703-675-1996
Publicity Chairman	Sandra Modersohn	sandra@sandramodersohn.com	973-727-8449
Photography	Ana Rampy	ana.sa.rampy@gmail.com	703-201-5474
Hospitality	Roberta Arcand	arcand1173@gmail.com	540-830-1468
Hostess Chair	Mary Beth McGurin	mbmcgurin@gmail.com	301-661-1237

TREASURING OUR ROOTS

GENERAL RULES

1. This Flower Show conforms to the standards established by National Garden Clubs, Inc. (NGC). The Handbook for Flower Shows (HB), 2017 Edition, with revisions available at [NGC January-2022-revision](#) is the authority for all issues not covered by the schedule, which is the law of the show
2. Only members of the Luray Garden Club may enter the show in Division I Horticulture and Division II Design Classes 1-4. However, Design Division Class 5 will be open only to Accredited and Student Flower Show Judges.
3. Horticultural entry cards will be available from Horticulture Entries Chairman, Joan Kestermann on May 10, or you may contact the chairman at Aria3020@aol.com 703-675-1996 to arrange pick-up.
4. Entries in the Design Division must be pre-registered with the Design Entries Chairman, Susan Zorn by April 20. The Design Entries Chairman will prepare all entry cards for all design classes and give them to the design exhibitors on the day of the show.
5. All exhibits will be accepted from 8:00 -10:00 am. May 21 at the Comer-Jones VFW. NO LATE ENTRIES ACCEPTED. Exhibits must be removed between 4:00 – 5:00 pm.
6. There must be an emphasis on **fresh** plant material. No artificial plant material will be allowed in any division.
7. The Classification Chairmen for each division checks exhibits for conformity to the schedule prior to judging. Final determination for conformance is the Judges' responsibility.
8. Judging will begin at 10:30 am on the day of the show. Only the General Chairman, the Classification Chairmen, Judges and the clerks will be allowed on the show floor during the time of judging. Judging will be by the NGC Standard System of Awarding, *Handbook for Flower Shows*, 2017 Edition and any revisions found in *The National Gardener*.
9. The General Chairman and the Classification Chairmen must be available during all judging for possible consultations.
10. The decision of the judges is final. Awards may be withheld if not merited.
11. The Luray Garden Club will strive to assure the safety of all items after arrival and placement but is not responsible for any loss or damage to exhibits.
12. Use of Virginia Conservation Plants is permitted if grown by the exhibitor, obtained in a legal manner, and labelled accordingly. The conservation plant list is defined on pg. 58 of the current VFGC yearbook or refer to the state website for a full list (www.dcr.virginia.gov/natural_heritage).

TREASURING OUR ROOTS

AWARDS

The NGC Standard System of Awards.

Only one first place (blue) ribbon per class or sub-class. Must score 90 or above.

Only one second place (red) ribbon per class or sub-class. Must score 85 or above.

Only one third place (yellow) ribbon per class or sub-class. Must score 80 or above.

One or more honorable mention (white) ribbons as merited. Must score 75 or above.

All non-blue ribbon exhibits scoring 90+ points must be signed and dated by an NGC Accredited Judge on the judging panel.

The Award of Horticultural Excellence will be awarded to the highest scoring exhibit in Horticulture Division I. The Award of Horticulture Excellence is a rosette of green, blue, and orange ribbons. (HB pg 40)

The Arboreal Award will be awarded to the highest scoring specimen in Division I Horticulture Section B. The Arboreal Award is a rosette of green ribbons. (Pgs. 40-41)

Three Award of Merit section awards will be awarded to the highest scoring specimens in Division I Horticulture Sections C, D, and E. (HB pg 41) Award is a rosette of orange ribbons.

Two Growers Choice Awards will be awarded to the highest scoring container grown specimen in Division I Horticulture Section A and to the highest scoring combination planting specimen in Section G. Growers Choice Award is a rosette of dark green ribbons. (HB pg 41)

The Luray Garden Club Iris Award will be awarded to the highest scoring cut iris exhibit in Horticulture Division I Sec C. Class 8. This award is a rosette of yellow ribbons.

A Best-in-Show Award will be awarded to in the Design Division II Section A Classes 1-3. The winning exhibit must be the highest blue-ribbon winners scoring 90 or above. The Best-in-Show is a rosette of three blue ribbons. (HB pg 45)

The Luray Garden Club Novice Award will be awarded to the highest scoring blue ribbon in Design Division II Section A Class 4. This award is a rosette of yellow ribbons.

The Luray Garden Club Excellence Award will be awarded to the highest scoring exhibit in Design Division II Section A Class 5. This award is a rosette of yellow ribbons.

An Award of Appreciation will be awarded to a non-judged exhibit. The Award of Appreciation is a rosette of orchid. (HB pg 45)

HORTICULTURE DIVISION I: *WHAT SURROUNDS US*

HORTICULTURE RULES

1. All plant material must be fresh and have been grown by the exhibitor.
2. Exhibits must have been in the possession of the exhibitor for no fewer than 90 days, with the exception of no minimum for early maturing vegetables (i.e., lettuce, radishes, etc.). Combination plantings must have been in possession of the exhibitor for a minimum of 6 weeks.
3. Plant material may not be altered by the application (treatment) of oil, commercial “shine” products, etc. that artificially change the natural color and texture.
4. All specimens should be correctly labeled with scientific (botanical) names or the currently accepted scientific identification for their educational value. Common name may also be added.
5. An exhibitor may enter more than one exhibit per class if each exhibit is a different species, variety, cultivar, type, or color.
6. Cut specimens must be displayed in clear transparent bottles provided by the exhibitor of suitable size and stability. (exception for some vegetable and legume specimens staged on white paper plates or clear glass containers with water.) Cut specimens should not have foliage below the water line.
7. Clear plastic wedging or a small, inconspicuous “plug” in the neck of a container to improve the pose of the specimen, is permitted. Wedging may be visible but must not detract from the cut specimen. Wedging must be provided by the exhibitor.
8. Double potting is permitted, but the inner pot must not be visible and the outer pot must be clean.
9. All entry cards should be filled out in advance in pencil or water-proof pen to avoid water damage.
10. The Classification Chairman has the authority to subdivide classes as necessary.
11. All plant containers larger than 12” must be pre-registered with Joan Kestermann at 703-675-1996 to ensure adequate display space. Special staging accommodations will be made for display of oversize plants.

All Cut or Container-Grown Horticulture Specimens and Collections (Arboreal, Flowering, Foliage, Fruit/Vegetable/Nuts)

Criteria	Value (points)
Conformance: Adherence to Schedule requirements for plant type and how it is exhibited (cut or container-grown). Other items are judged under other Criteria such as blooming (Form/Maturity), number of leaves (Form/Maturity), stem length (Size/Grooming), container (Staging), etc.	5
Plant Identification	5
Peak of Perfection	
Form	20
Color	20
Maturity/Size	20
Condition/Blemishes	15
Grooming/Staging	
Grooming	10
Staging	5
TOTAL	100

HORTICULTURE DIVISION I: WHAT SURROUNDS US

The highest scoring exhibit in the entire division is eligible for the **Award of Horticultural Excellence**.

Section A. CONTAINER GROWN PLANTS *Nana's Treasures*

All plants in a container garden greater than 12 inches in diameter must be pre-registered to allow for display space. More than one plant of the same species and color (self-multiple or multiple planting) is permitted.

Eligible for Growers Choice Award.

Class 1. Foliage Plants

- a. *Bromeliaceae* (Bromeliad)
- b. *Dracaena* (Snake Plant)
- c. *Pteridophyta* (Ferns)
- d. *Spathiphyllum* (Peace Lily)
- e. Any other worthy named foliage plants not listed

Class 2. Flowering plants

- a. *Begonia* (Begonia)
- b. *Pelargonium* (Geranium)
- c. *Saintpaulia* (African violet)
- d. any other worthy named flowering plant not listed

Class 3. Succulents & cactus

- a. *Aloe* (Aloe)
- b. *Haworthia* (Haworthia)
- c. *Sempervivum* (Hens and Chicks)
- d. Any other named succulent or cactus

Section B: CUT ARBOREAL TREES & SHRUBS *Deep Roots*

Cut arboreal tree or shrub specimens – one stem maximum length 30” from the cut end to the tip end, must have several nodes and apical tip). Displayed in clear glass bottles. Clear plastic wedging is permitted. Clear glass marbles may be used for ballast. **Eligible for Arboreal Award.**

Class 4. *Buxus sempervirens* (American Boxwood)

Class 5. *Pinus virginiana* (Virginia pine)

Class 6. *Quercus* (Oak Tree)

Class 7. Any other worthy named tree or shrub

Section C: CUT PERENNIAL FLOWERS *Blooming for Decades*

Cut flowers – one flowering stem. **Eligible for Award of Merit.**

Class 8. *Iris* (Iris) **Class 8 eligible for LGC Iris Award**

Class 9. *Paeonia* (Peony)

Class 10. *Rosa* (Rose)

Class 11. Any other worthy named perennial flower

Section D: CUT FOLIAGE *Valley So Green*

Cut foliage plant specimens – one stem **Eligible for Award of Merit.**

- Class 12. *Hedera* (Ivy)
- Class 13. *Plantain lilies* (Hosta)
- Class 14. *Vascular plant* (Fern)
- Class 15. Any other worthy named foliage plant

Section E: CUT HERBS *Mrs. H. H. Hudson’s Herb Garden*

Cut specimens of herb foliage - one stem with or without bloom. **Eligible for Award of Merit.**

- Class 16. *Lavandula* (Lavender)
- Class 17. *Mentha* (Mint)
- Class 18. *Rosmarinus officinalis* (Rosemary)
- Class 19. *Salvia officinalis* (Sage)
- Class 20. *Thymus vulgaris* (Thyme)
- Class 21. Any other worthy named herb

Section F: EARLY VEGETABLES & LEGUMES *Grandma’s Victory Garden*

Specimens to be displayed on a white paper plate or clear glass container with water provided by the Flower Show Committee.

- Class 22. *Asparagus officinalis* (Asparagus) (4 spears in clear jar with water)
- Class 23. *Beta vulgaris L.* (Swiss Chard) (1 plant w/roots in clear jar with water)
- Class 24. *Lactuca sativa* (Lettuce) (1 plant w/roots in clear jar with water)
- Class 25. *Brassica oleracia* (Kale) (1 plant w/roots in clear jar with water)
- Class 26. *Pisum sativum* (Peas) (8 pods on a white paper plate)
- Class 27. *Raphanus sativus* (Radishes) (5 radishes in a bunch w/leaves on white paper plate)
- Class 28. *Allium porrum* (Leeks) (3 specimen with roots in a clear jar with water)
- Class 29. Any other worthy named vegetable or legume

Section G: COMBINATION PLANTING

Front Porch Wonders

A grouping of three (3) or more botanically different plants with similar cultural requirements. Naturalistic accessories permitted in all combination planting types, but must be in scale with plantings and container, and theme appropriate to the plants. (HB pg 59). Combination Plantings must have been growing together and in exhibitor’s possession for at least 6 weeks. NOTE: All combination plantings in a container greater than 12 inches in diameter must be pre-registered to allow for display space. **Eligible for Growers Choice Award.**

- Class 30. Dish Garden
- Class 31. Hanging Garden
- Class 32. Planter

Combination Plantings and Gardens (Foliage or flowering)	
Conformance.....	5
Plant Identification.....	5
Labeling	5
Peak of Perfection	35
Form	10
Color	10
Condition	10
Show-worthy Size.....	5
Overall Effect	30
Creative/Distinctive.....	5
Grooming.....	10
Staging.....	5
Total Score	100

DESIGN DIVISION II: *LOOKING BACK*
DESIGN RULES

1. A design entered in competition must be the work of one exhibitor and that exhibitor's name must appear on the entry card.
2. An exhibitor may enter only one exhibit per class.
3. Fresh plant material may not be treated in any manner. Plant material that has been treated to alter its exterior appearance may be used only in its dried state.
4. The designer has the freedom to choose Traditional or Creative style with any design type listed unless restricted by the schedule.
5. Entries in the Division be made in advance with the Design Entries Chairman. If a designer is unable to fulfill an assignment, it is the designer's responsibility to provide a replacement and to notify the Design Entries Chairman.
6. Plant material used in designs need not have been grown by the exhibitor.
7. No artificial flowers, foliage, fruits, or vegetables are permitted in the Design Division.
8. Landscapes or scenes are not permitted in the Design Division.
9. There is no height restriction, but table space may not exceed 24" deep by 30" wide.
10. Refer to pp. 80-81 of the *NGC Handbook* for things permitted in all design classes unless prohibited by the schedule or by law.
11. The Design Scale of Points is listed on pg. 130 of the *NDG Handbook*:

All Designs

Criteria	Value (points)
Conformance	
To Type	7
To Schedule Requirements	7
Design Principles	48
Selection of Components	8
Organization of Components	8
Expression	8
Distinction	14
TOTAL	100

DESIGN DIVISION II: *LOOKING BACK*

Exhibits scoring 95 or more in Classes 1-3, will be eligible for the **Best in Show Award**.

Section A – *WHAT DEFINES US*

Class 1 *Mountains, Caverns, and Waterfalls* (4 Exhibits)

A cascade design , using fresh and/or dried plant material, staged on a 24” deep x 30” wide area of a 30” tall table provided by the committee. Tables are covered with white material and have green skirting to the floor. Underlay and staging panel required and provided by exhibitor. No height restriction.

Class 2. *The Valley is Calling* (4 Exhibits)

An American Traditional design using fresh and/or dried plant material, staged on a 24” deep x 30” wide area of a 30” tall table provided by the committee. Tables are covered with white material and have green skirting to the floor. Underlay and staging panel are required and provided by exhibitor. No height restriction.

Class 3. *Merchants on Main Street* (4 Exhibits)

An 8” Petite Design, using fresh and/or dried plant material, staged near eye level in front of a black foam core (provided by the club) on a bench draped in white material on a table covered with white material. Underlay and staging panel not to exceed 8” square are required and provided by the exhibitor.

Class 4. *Life on the Farm* (4 Exhibits)

A parallel design using fresh and/or dried plant material, staged on a 24” deep x 30” wide area of a 30” tall table provided by the committee. Tables are covered with white and have green skirting to the floor. Underlay and staging panel required and provided by exhibitor. No height restriction.

Novice Designers only.

Eligible for LGC Novice Designer Award.

Class 5 *Boom-time in Luray* (3 Exhibits)

A creative design using fresh and/or dried plant material, staged on a 24” deep x 30” wide area of a 30” tall table provided by the committee. Tables are covered with white and have green skirting to the floor. Underlay and staging panel are required and provided by exhibitor. No height restriction.

Invitational for accredited and student judges only.

Eligible for Luray Garden Club Excellence Award.

TEACHING OTHERS
EXHIBIT

1. The exhibit must occupy a minimum of 18 square feet of surface area.
2. Handout materials add to the educational value but are not required.
3. Each part of the exhibit should contribute to the distinctive overall effect.
4. This Exhibit is informational and not for judging.
5. This will be eligible for an Award of Appreciation.

Exhibit 1. How to make a succulent kokedama.

The cover art, *Chinquapin Oak*, is a color pen and ink watercolor of the ~ 265-year-old [remarkable tree of Virginia](#) located across the street from the historic Page County Courthouse. (The artist allowed us to insert the roots at the bottom of her drawing.)

The artist, Chris Anderson, was named the 2021 Conservationist of the Year by the Shenandoah Valley Water Soil and Conservation District. In addition to her art and photography, Chris has an impressive career in conservation. Read more about her award and career [HERE](#).